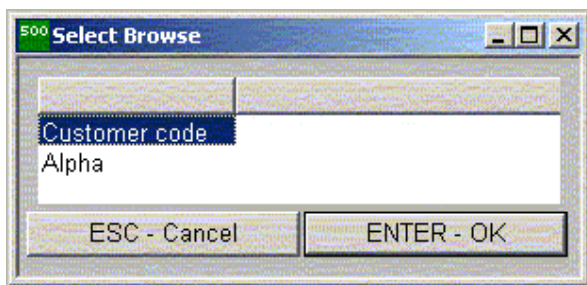




Red IT **SageFind** allows Sage Line 200 and Line 500 users to re define their F2 browses using SQL commands. The main benefits are:

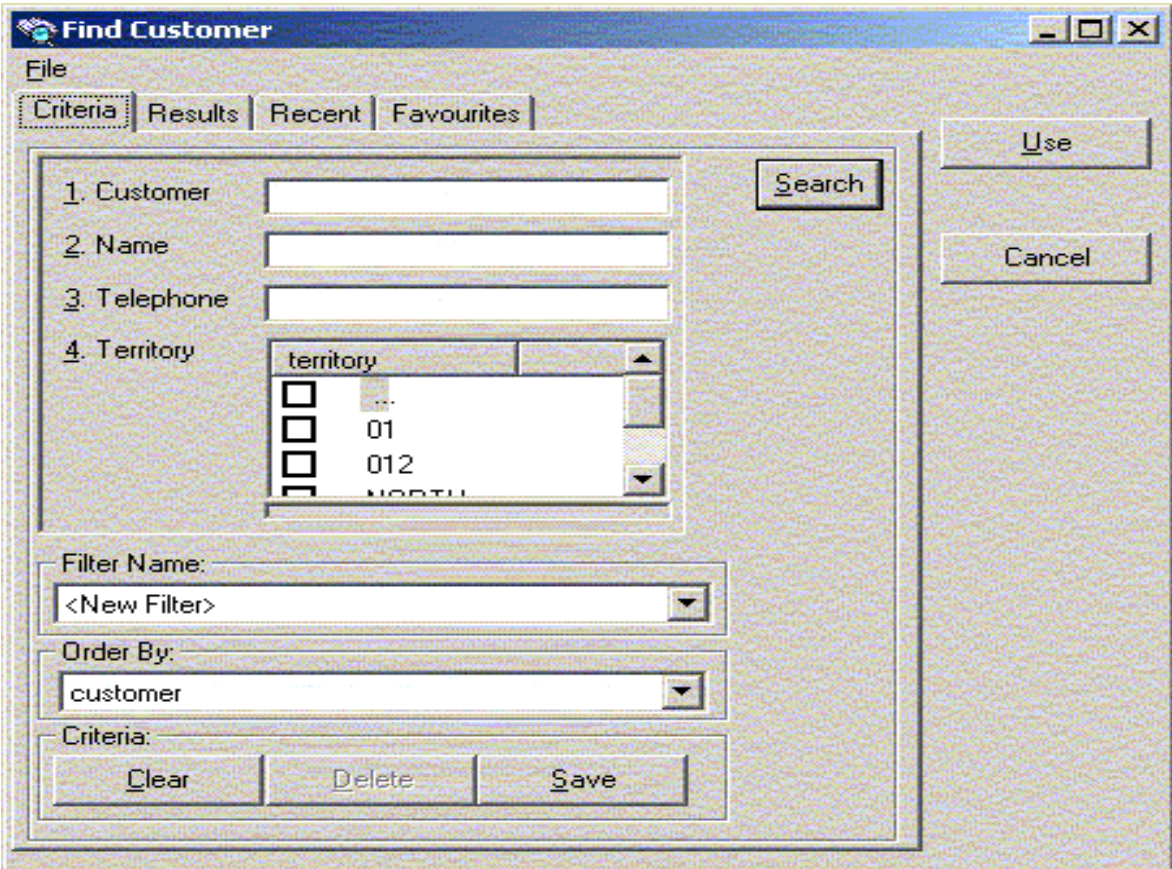
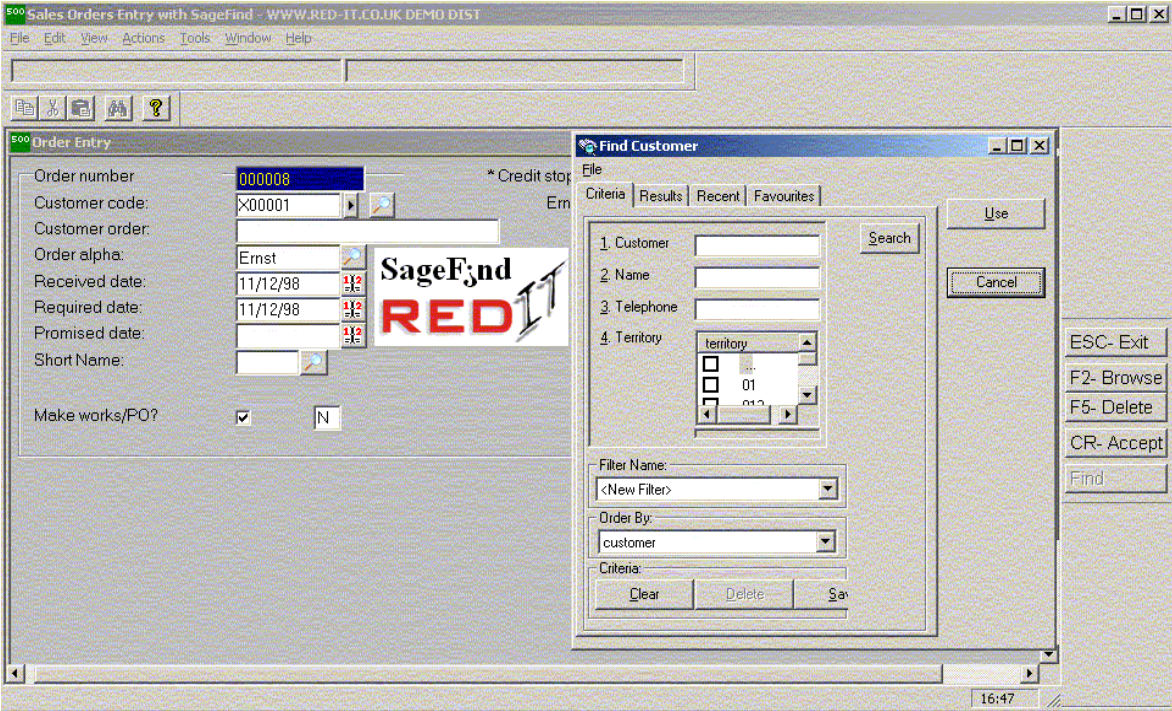
- new browses can be added to ANY field on ANY screen in ANY module
- data can be retrieved from ANY database accessible from SQL queries
- it is very user friendly and intuitive
- it significantly improves the usability of the various Sage programs
- favourite searches \ sorts can be saved for future use
- result columns can be automatically re sorted by clicking on the column header

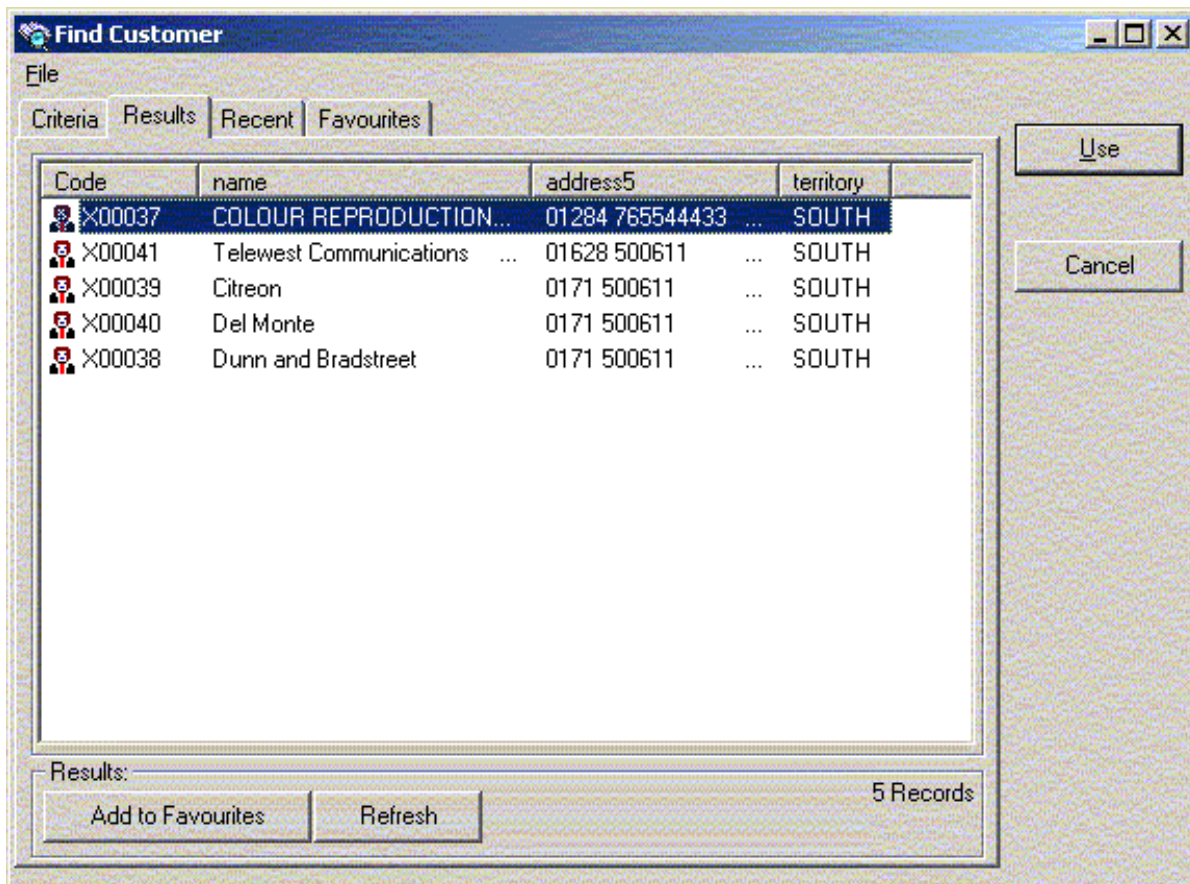
For example, customers in the standard Sales Order Entry can only be selected using the F2 function key with the following options:



But with **SageFind**, a new browse can be set to search by :

- Customer Name
- Telephone number
- Territory
- or any other field accessible from an SQL query





Other uses for **SageFind** include:

- creating consolidated browses between Sage and non Sage databases
- showing calculated columns in the browser e.g. Free stock

Red IT **SageFind** is a VERY versatile utility with almost limitless applications. We would be very happy to discuss your requirements and to propose how Red IT **SageFind** could be tailored to meet your needs.

sagefind@red-it.co.uk