



**Integrated IT for all types of businesses**



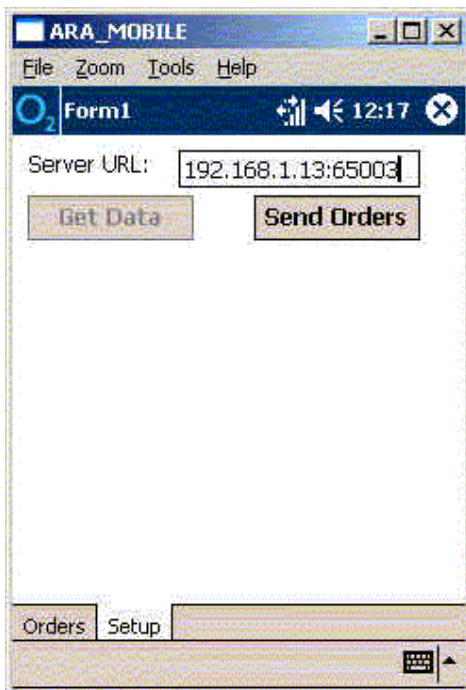
## **PDA Orders**

The PDA Orders utility allows Sage Line 200 and Line 500 Sales Order data to be captured using a PocketPC PDA. The main benefits are:

- it is very easy to use and intuitive
- it allows quick order entry with minimum of key strokes
- it can queue transactions for when PDA is out of mobile network communication
- there is 2 way synchronisation with Sage server for customer \ product \ price list \ order ... details

The powerful functionality of the PDA Orders utility is best described by example. In the scenario below, an order is taken using the PDA and the data is imported in to the Sage server

The first step is to download the latest customer, product, price list,... information to the PDA from the Sage server:





In step 2, the order is taken using the PDA

ARA\_MOBILE  
File Zoom Tools Help  
Form1 12:03

Customer: X00001  
Cust Ref: 123456789

Product	Qty	Price	Description
32 MG RAM	1	1.00	32 MG RAM
64 MG RAM	2	10.00	64 MG RAM

Edit Qty Update Qty Cancel  
 Ordered Lines Only  
Accept Order  
Orders Setup

'Accept Order' in step 3 saves the details ready for synchronisation with the Sage server

ARA\_MOBILE  
File Zoom Tools Help  
Form1 12:19

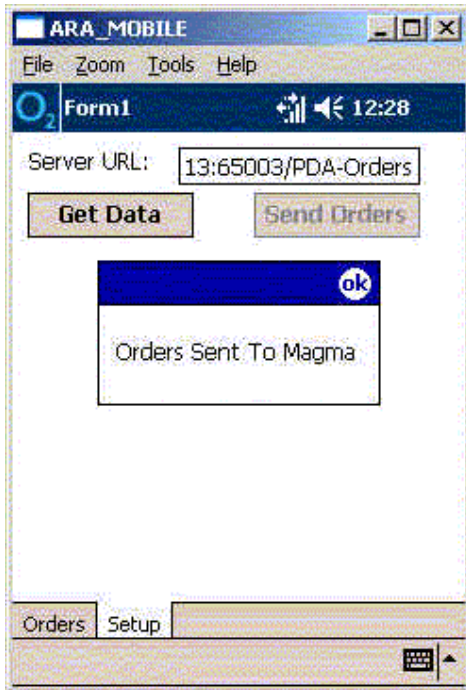
Customer: X00001  
Cust Ref: 123456789

Order With Ref:123456789  
Saved To Pending Orders  
File

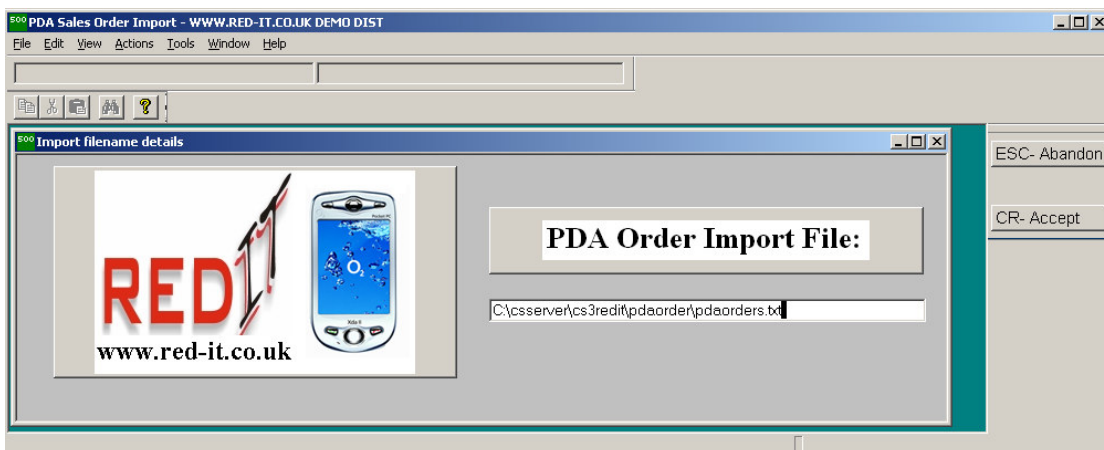
Edit Qty Update Qty Cancel  
 Ordered Lines Only  
Accept Order  
Orders Setup



The final step 4 is the sending of data to the Sage server ready for processing:



The orders are then imported in to Sage as required.



Red IT PDA Orders is a VERY versatile utility which has almost limitless applications. It uses the mature Magma Integration Toolkit which can be used to import other types of transactions to the Sage server e.g. GRN, Despatch Confirmation,..... We would be very happy to discuss your requirements and to propose how Red IT PDA Orders could be tailored to meet your needs.

[pdaorders@red-it.co.uk](mailto:pdaorders@red-it.co.uk)